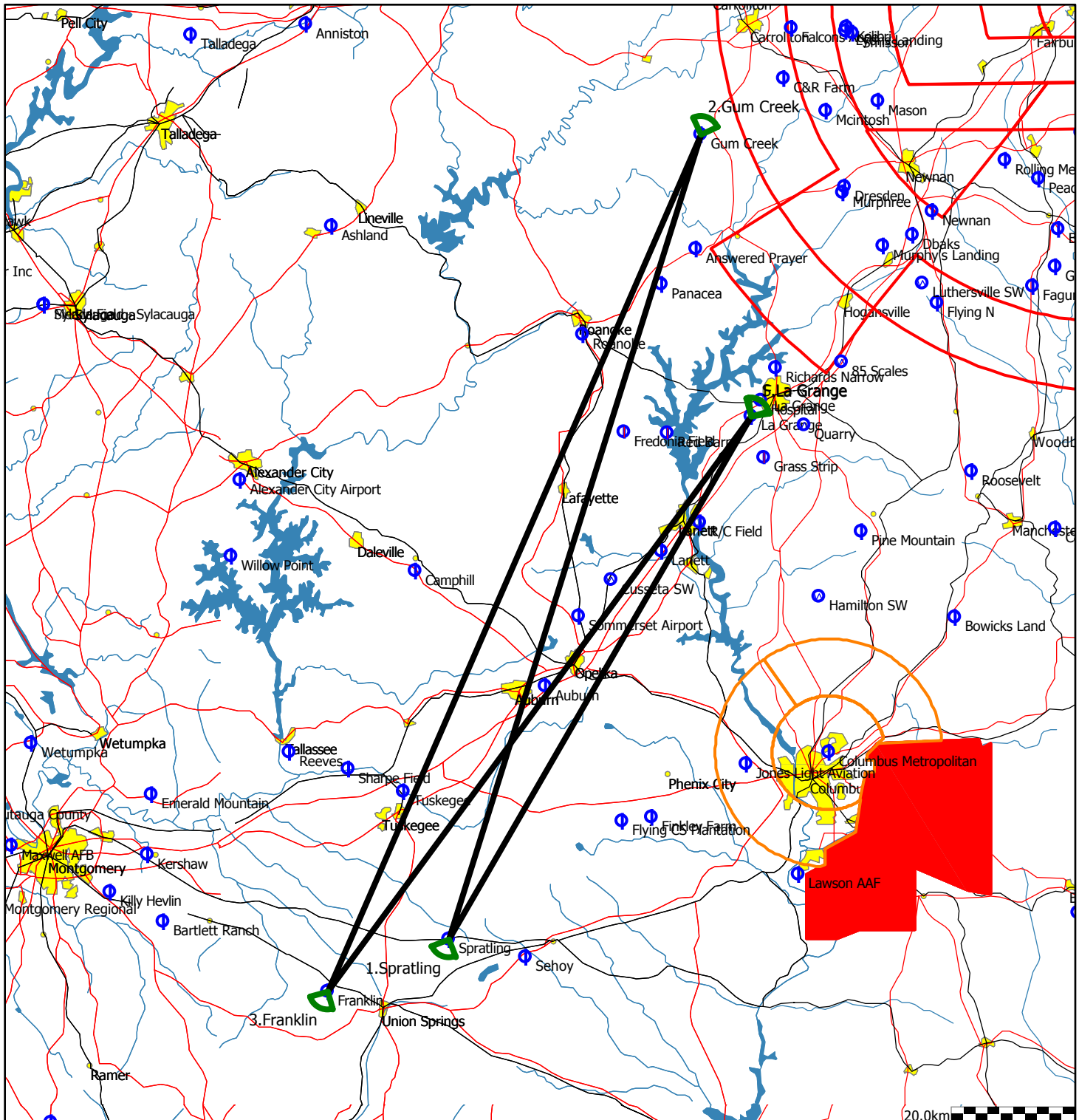


Type: Polygon with three points

Task distance: 504.3km

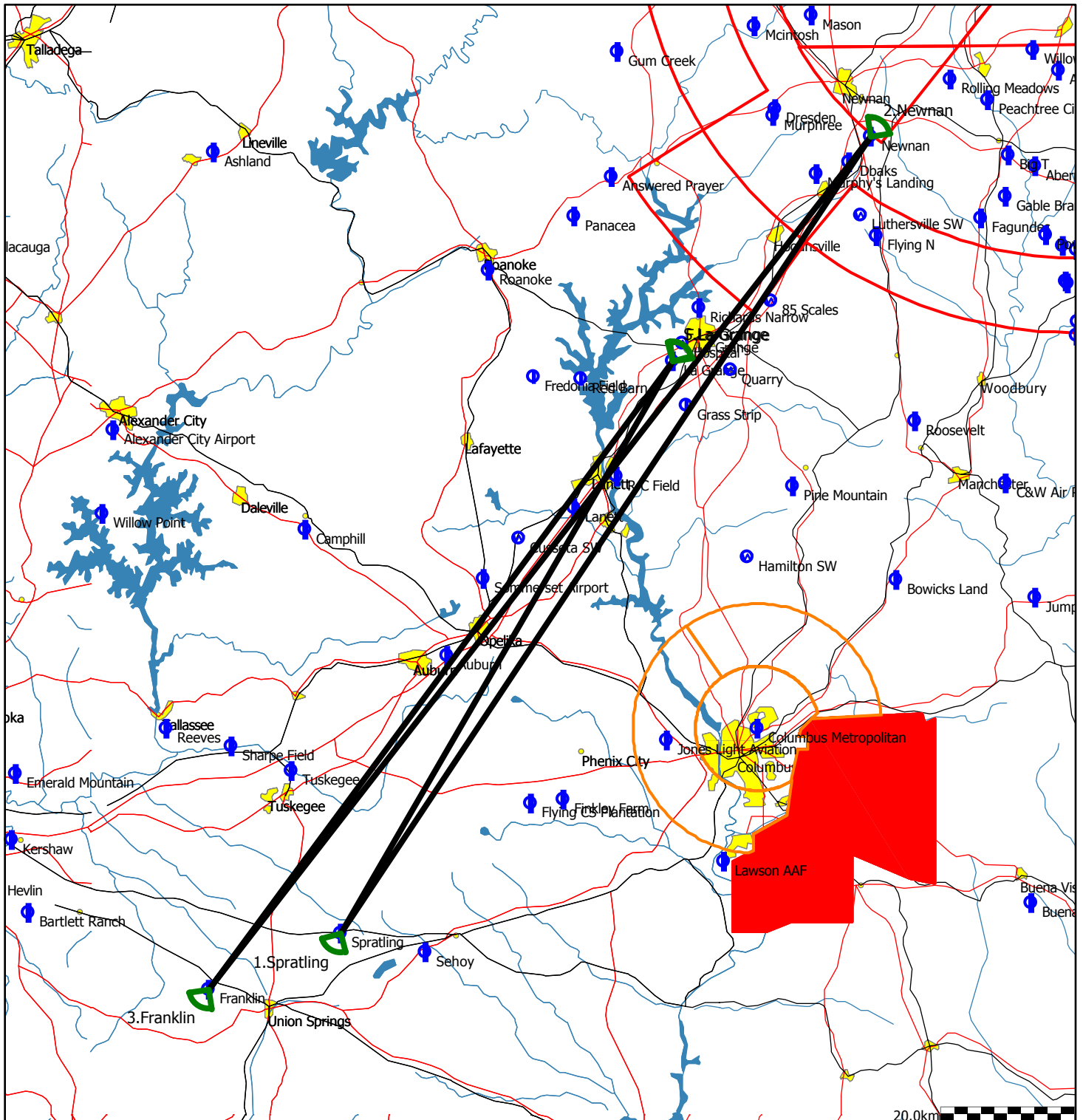
Style	Code	Points	Latitude	Longitude	Dis.	Crs.
Take off	1	La Grange	N33°00.500'	W085°04.400'		
Start	1	La Grange	N33°00.500'	W085°04.400'		
1.Point	36	Spratling	N32°14.542'	W085°36.064'	98.5km	210°
2.Point	18	Gum Creek	N33°25.273'	W085°09.713'	137.3km	17°
3.Point	16	Franklin	N32°10.000'	W085°48.667'	152.1km	204°
Finish	1	La Grange	N33°00.500'	W085°04.400'	116.3km	36°
Landing	1	La Grange	N33°00.500'	W085°04.400'		



Type: Polygon with three points

Task distance: 517.8km

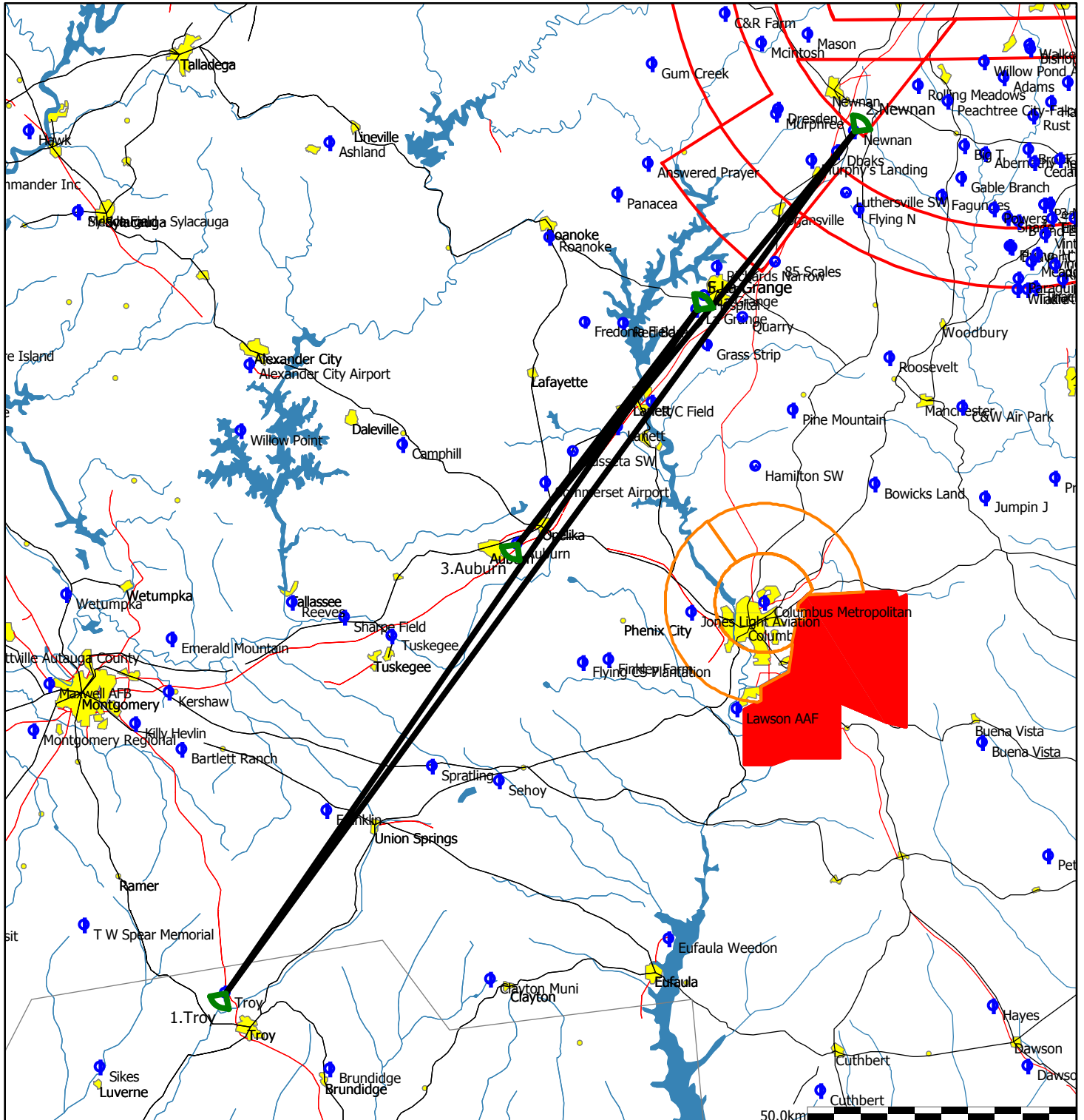
Style	Code	Points	Latitude	Longitude	Dis.	Crs.
Take off	1	La Grange	N33°00.500'	W085°04.400'		
Start	1	La Grange	N33°00.500'	W085°04.400'		
1.Point	36	Spratling	N32°14.542'	W085°36.064'	98.5km	210°
2.Point	25	Newnan	N33°18.500'	W084°45.500'	142.3km	33°
3.Point	16	Franklin	N32°10.000'	W085°48.667'	160.7km	218°
Finish	1	La Grange	N33°00.500'	W085°04.400'	116.3km	36°
Landing	1	La Grange	N33°00.500'	W085°04.400'		



Type: Polygon with three points

Task distance: 509.1km

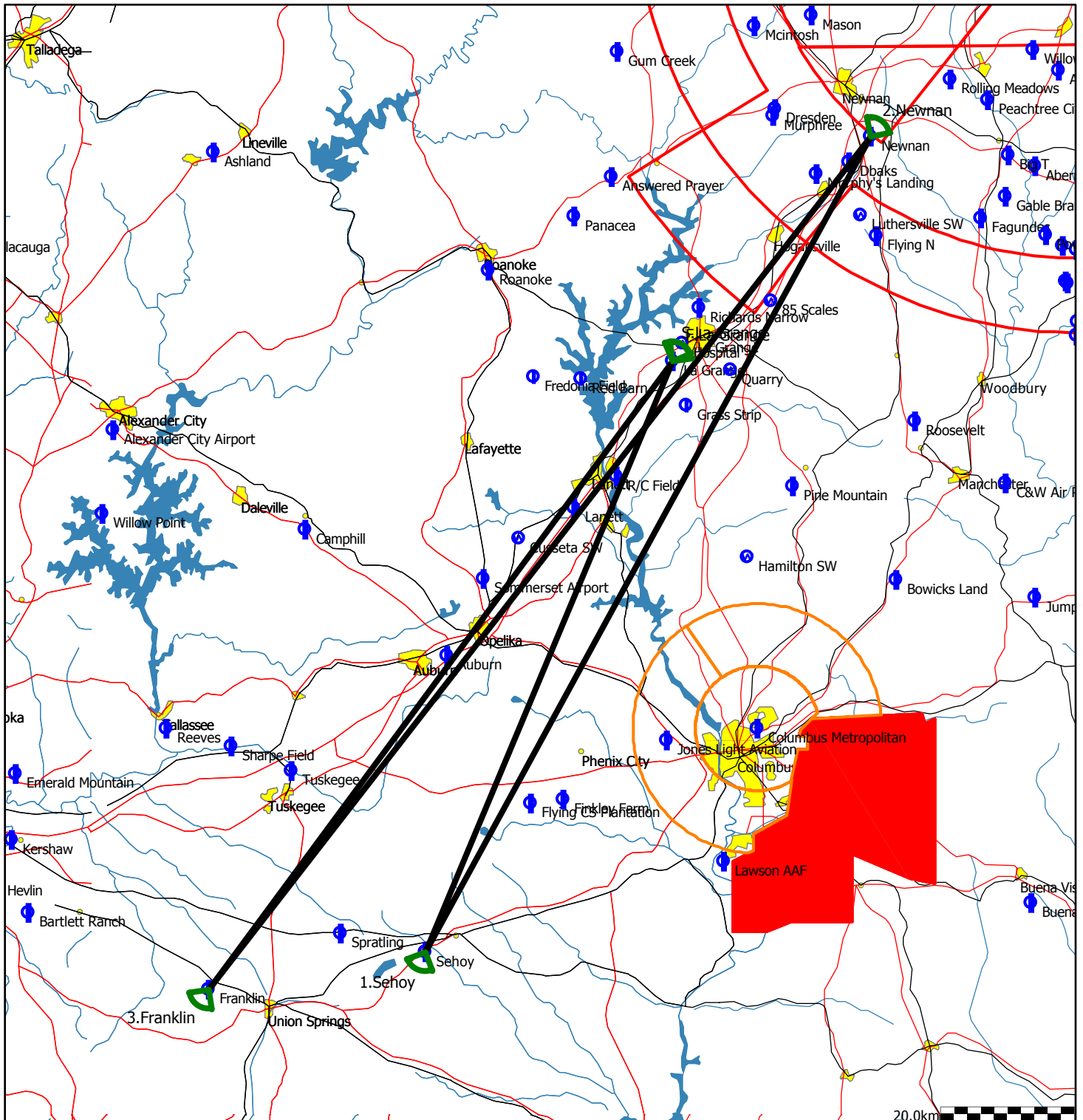
Style	Code	Points	Latitude	Longitude	Dis.	Crs.
Take off	1	La Grange	N33°00.500'	W085°04.400'		
Start	1	La Grange	N33°00.500'	W085°04.400'		
1.Point	58	Troy	N31°51.625'	W086°00.728'	155.1km	215°
2.Point	25	Newnan	N33°18.500'	W084°45.500'	199.3km	36°
3.Point	6	Auburn	N32°36.833'	W085°25.917'	99.6km	219°
Finish	1	La Grange	N33°00.500'	W085°04.400'	55.2km	37°
Landing	1	La Grange	N33°00.500'	W085°04.400'		



Type: Polygon with three points

Task distance: 510.7km

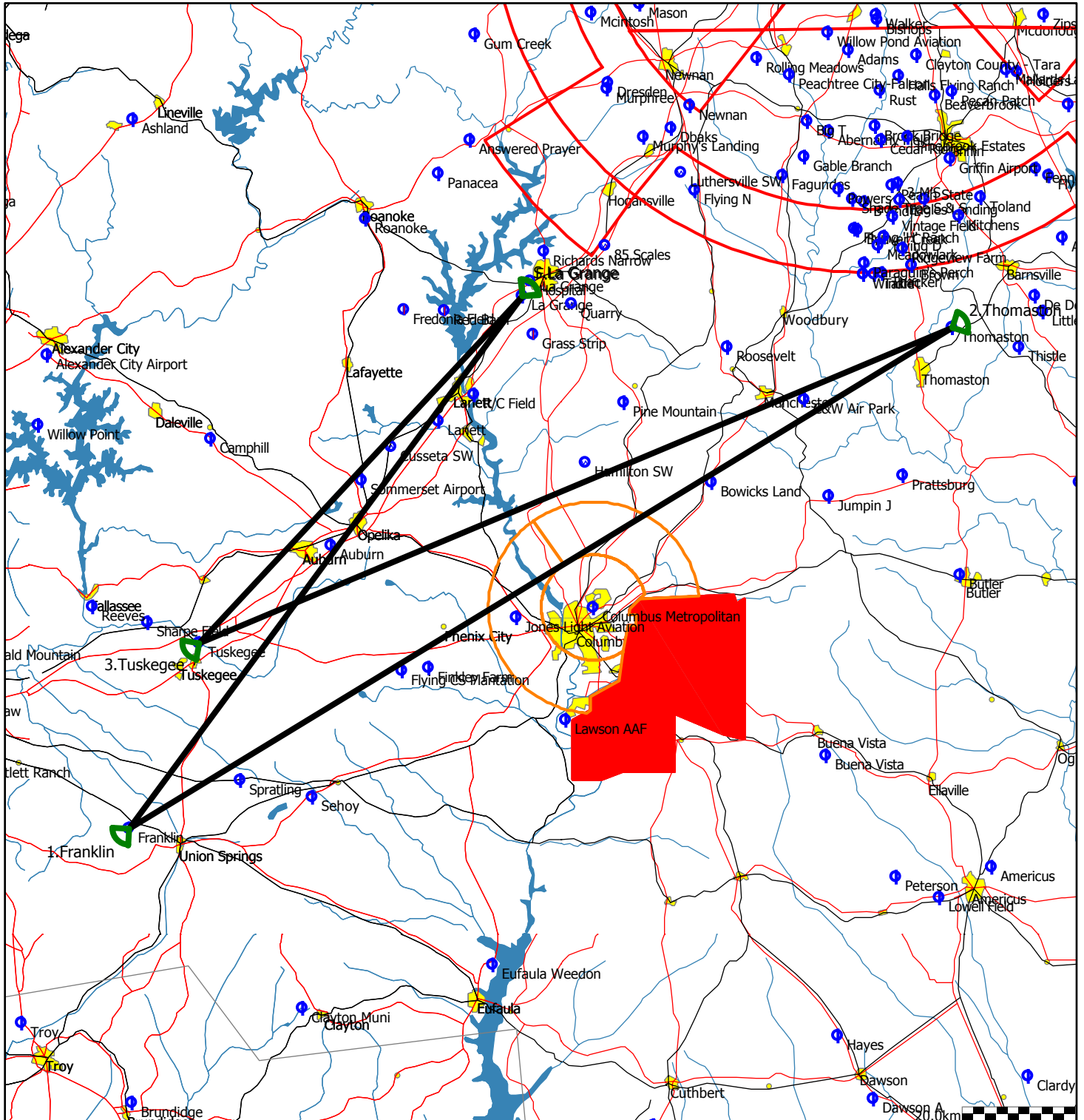
Style	Code	Points	Latitude	Longitude	Dis.	Crs.
Take off	1	La Grange	N33°00.500'	W085°04.400'		
Start	1	La Grange	N33°00.500'	W085°04.400'		
1.Point	35	Sehoy	N32°13.000'	W085°28.000'	95.4km	203°
2.Point	25	Newnan	N33°18.500'	W084°45.500'	138.3km	28°
3.Point	16	Franklin	N32°10.000'	W085°48.667'	160.7km	218°
Finish	1	La Grange	N33°00.500'	W085°04.400'	116.3km	36°
Landing	1	La Grange	N33°00.500'	W085°04.400'		



Type: Polygon with three points

Task distance: 512.5km

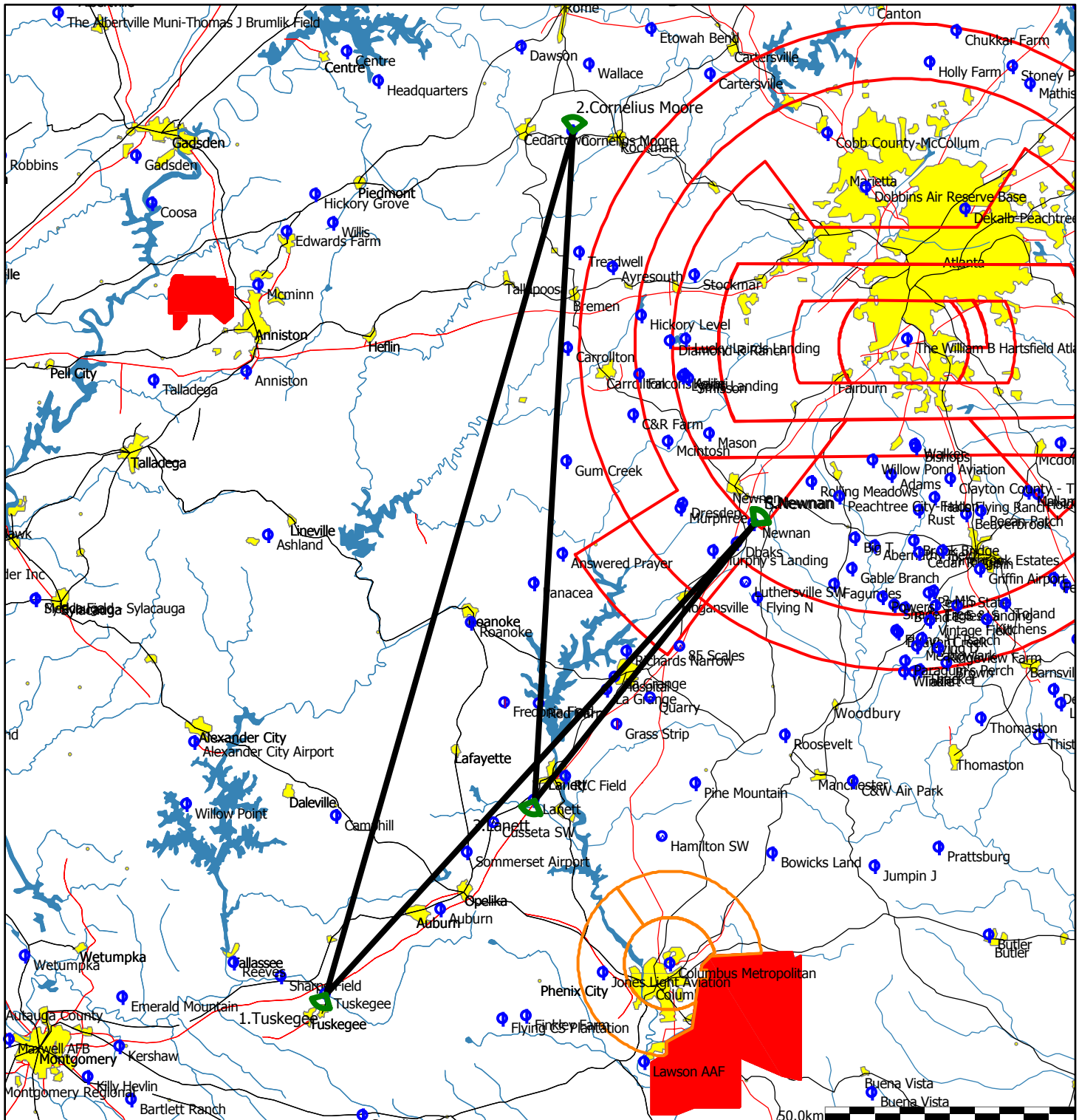
Style	Code	Points	Latitude	Longitude	Dis.	Crs.
Take off	1	La Grange	N33°00.500'	W085°04.400'		
Start	1	La Grange	N33°00.500'	W085°04.400'		
1.Point	16	Franklin	N32°10.000'	W085°48.667'	116.3km	217°
2.Point	38	Thomaston	N32°57.500'	W084°16.000'	169.4km	58°
3.Point	39	Tuskegee	N32°27.583'	W085°40.833'	143.4km	248°
Finish	1	La Grange	N33°00.500'	W085°04.400'	83.3km	43°
Landing	1	La Grange	N33°00.500'	W085°04.400'		



Type: Polygon with three points

Task distance: 512.8km

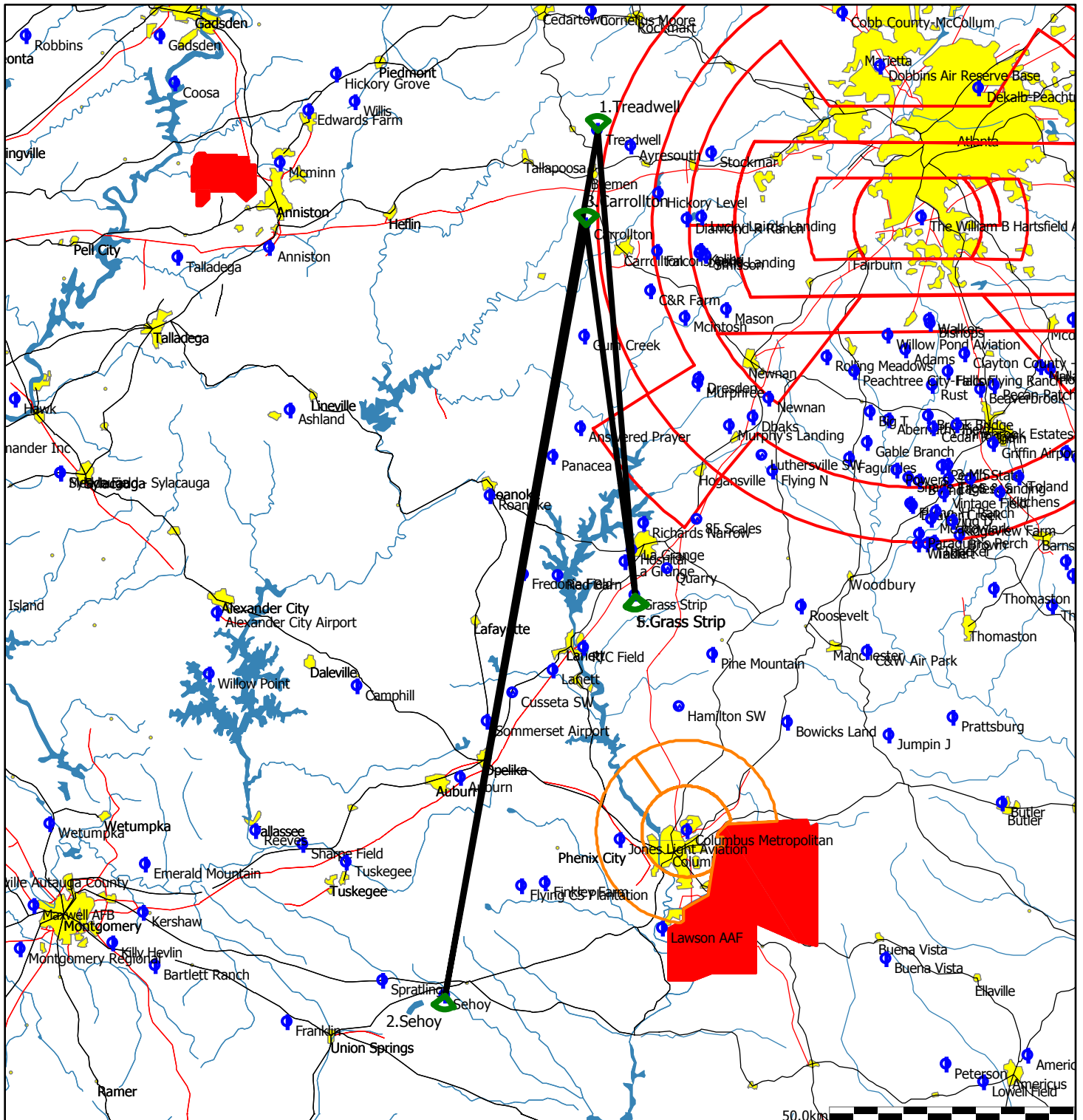
Style	Code	Points	Latitude	Longitude	Dis.	Crs.
Take off	1	La Grange	N33°00.500'	W085°04.400'		
Start	25	Newnan	N33°18.500'	W084°45.500'		
1.Point	39	Tuskegee	N32°27.583'	W085°40.833'	127.7km	223°
2.Point	47	Cornelius Moore	N34°01.000'	W085°08.833'	180.1km	16°
3.Point	23	Lanett	N32°48.667'	W085°13.833'	134.3km	183°
Finish	25	Newnan	N33°18.500'	W084°45.500'	70.7km	38°
Landing	1	La Grange	N33°00.500'	W085°04.400'		



Type: Polygon with three points

Task distance: 508.6km

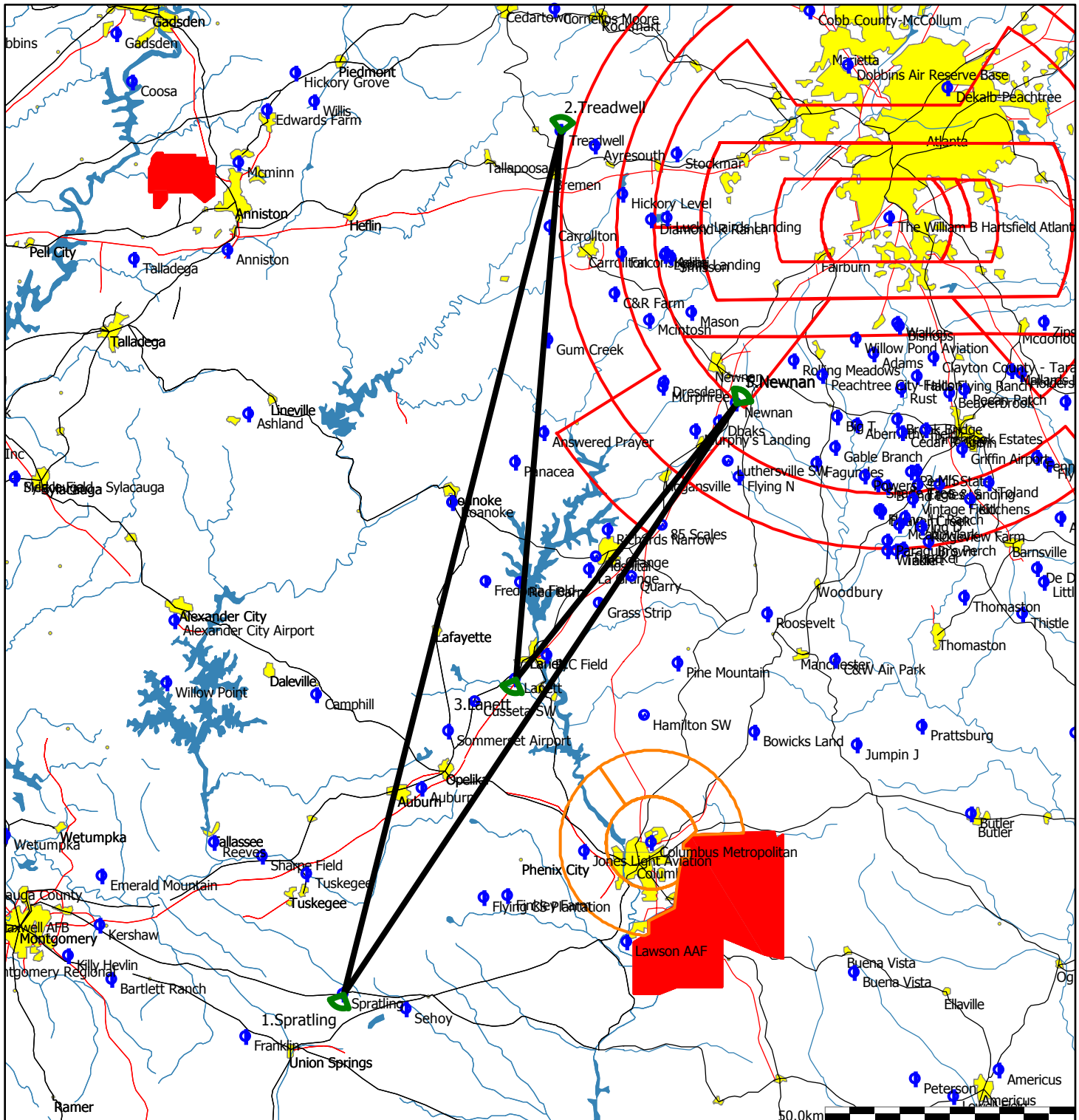
Style	Code	Points	Latitude	Longitude	Dis.	Crs.
Take off	1	La Grange	N33°00.500'	W085°04.400'		
Start	17	Grass Strip	N32°56.867'	W085°03.115'		
1.Point	125	Treadwell	N33°47.883'	W085°07.983'	94.8km	355°
2.Point	35	Sehoy	N32°13.000'	W085°28.000'	178.6km	190°
3.Point	11	Carrollton	N33°37.500'	W085°09.500'	159.2km	10°
Finish	17	Grass Strip	N32°56.867'	W085°03.115'	75.9km	172°
Landing	1	La Grange	N33°00.500'	W085°04.400'		



Type: Polygon with three points

Task distance: 501.5km

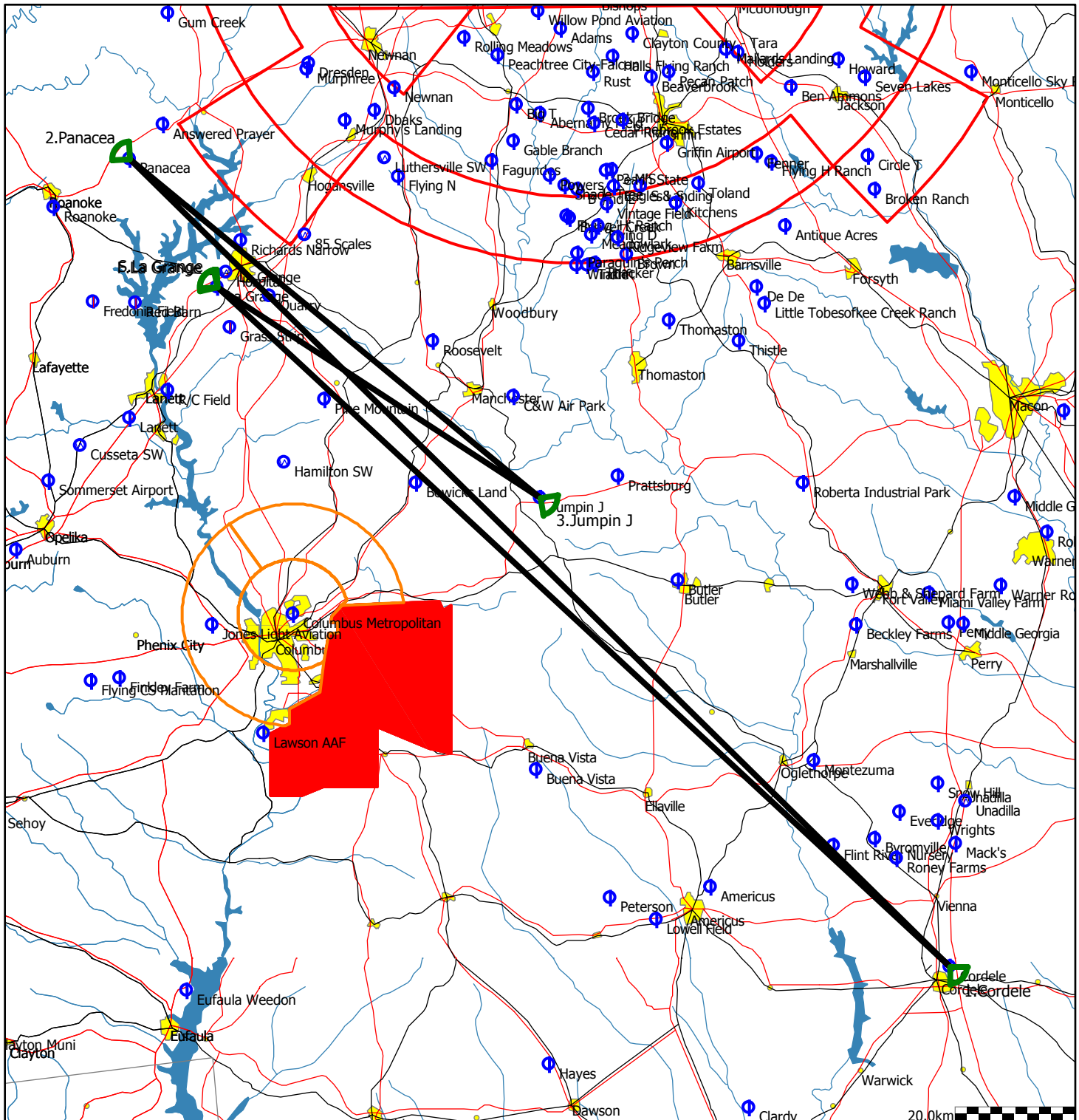
Style	Code	Points	Latitude	Longitude	Dis.	Crs.
Take off	1	La Grange	N33°00.500'	W085°04.400'		
Start	25	Newnan	N33°18.500'	W084°45.500'		
1.Point	36	Spratling	N32°14.542'	W085°36.064'	142.3km	214°
2.Point	125	Treadwell	N33°47.883'	W085°07.983'	178.4km	14°
3.Point	23	Lanett	N32°48.667'	W085°13.833'	110.1km	185°
Finish	25	Newnan	N33°18.500'	W084°45.500'	70.7km	38°
Landing	1	La Grange	N33°00.500'	W085°04.400'		



Type: Polygon with three points

Task distance: 513.0km

Style	Code	Points	Latitude	Longitude	Dis.	Crs.
Take off	1	La Grange	N33°00.500'	W085°04.400'		
Start	1	La Grange	N33°00.500'	W085°04.400'		
1.Point	46	Cordele	N31°59.181'	W083°45.921'	167.2km	132°
2.Point	26	Panacea	N33°12.107'	W085°13.830'	192.6km	315°
3.Point	21	Jumpin J	N32°41.508'	W084°29.829'	88.9km	129°
Finish	1	La Grange	N33°00.500'	W085°04.400'	64.3km	303°
Landing	1	La Grange	N33°00.500'	W085°04.400'		



Type: Polygon with three points

Task distance: 525.8km

Style	Code	Points	Latitude	Longitude	Dis.	Crs.
Take off	1	La Grange	N33°00.500'	W085°04.400'		
Start	1	La Grange	N33°00.500'	W085°04.400'		
1.Point	38	Thomaston	N32°57.500'	W084°16.000'	75.4km	94°
2.Point	3	Answered Prayer	N33°15.233'	W085°10.217'	90.4km	292°
3.Point	46	Cordele	N31°59.181'	W083°45.921'	192.8km	137°
Finish	1	La Grange	N33°00.500'	W085°04.400'	167.2km	313°
Landing	1	La Grange	N33°00.500'	W085°04.400'		

