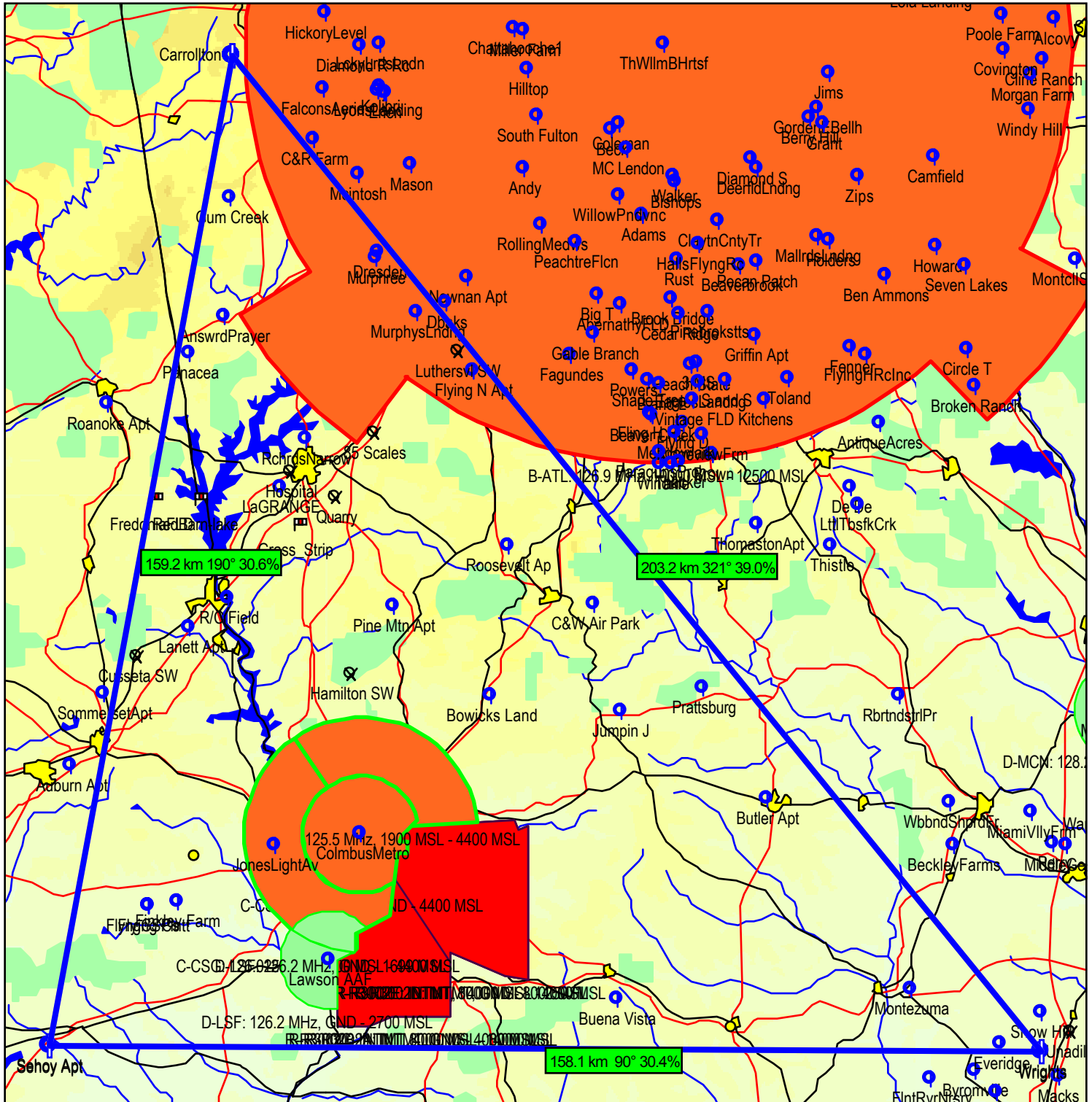


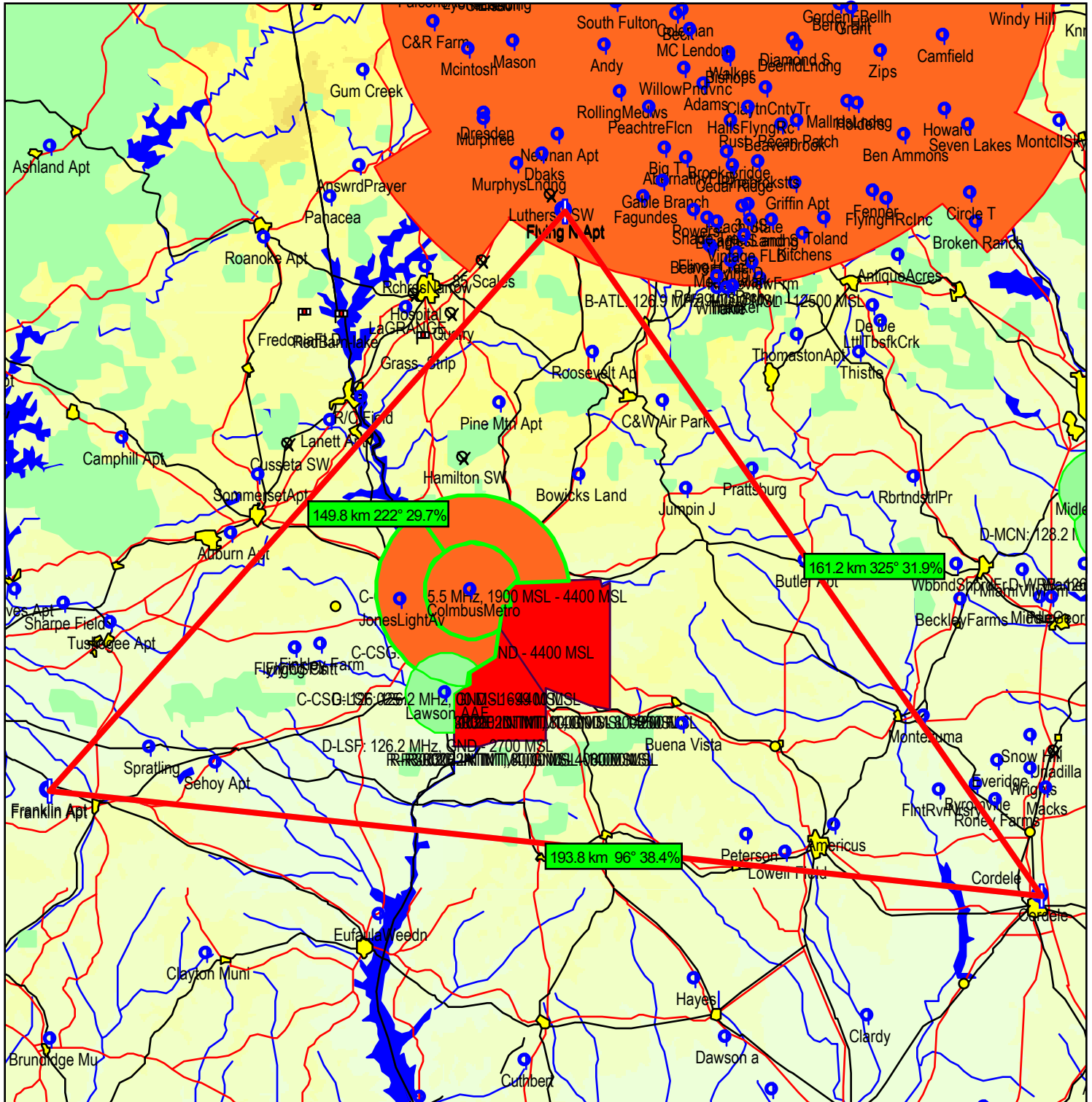
Route description

500k Tri Carrollton Sehoy Wrights			Triangle - FAI			
	Name	Latitude	Longitude	Distance	Course	Percentage
Takeoff	Carrollton	N33°37.500	W085°09.500			
Startpoint	Carrollton	N33°37.500	W085°09.500	159.2 km	190°	30.6%
1. Turnpoint	Sehoy Apt	N32°13.000	W085°28.000	158.1 km	90°	30.4%
2. Turnpoint	Wright's	N32°12.376	W083°47.177	203.2 km	321°	39.0%
Finishpoint	Carrollton	N33°37.500	W085°09.500			
Landing	Carrollton	N33°37.500	W085°09.500			
Total distance				520.5 km		
Scoring distance				520.5 km		
Points						



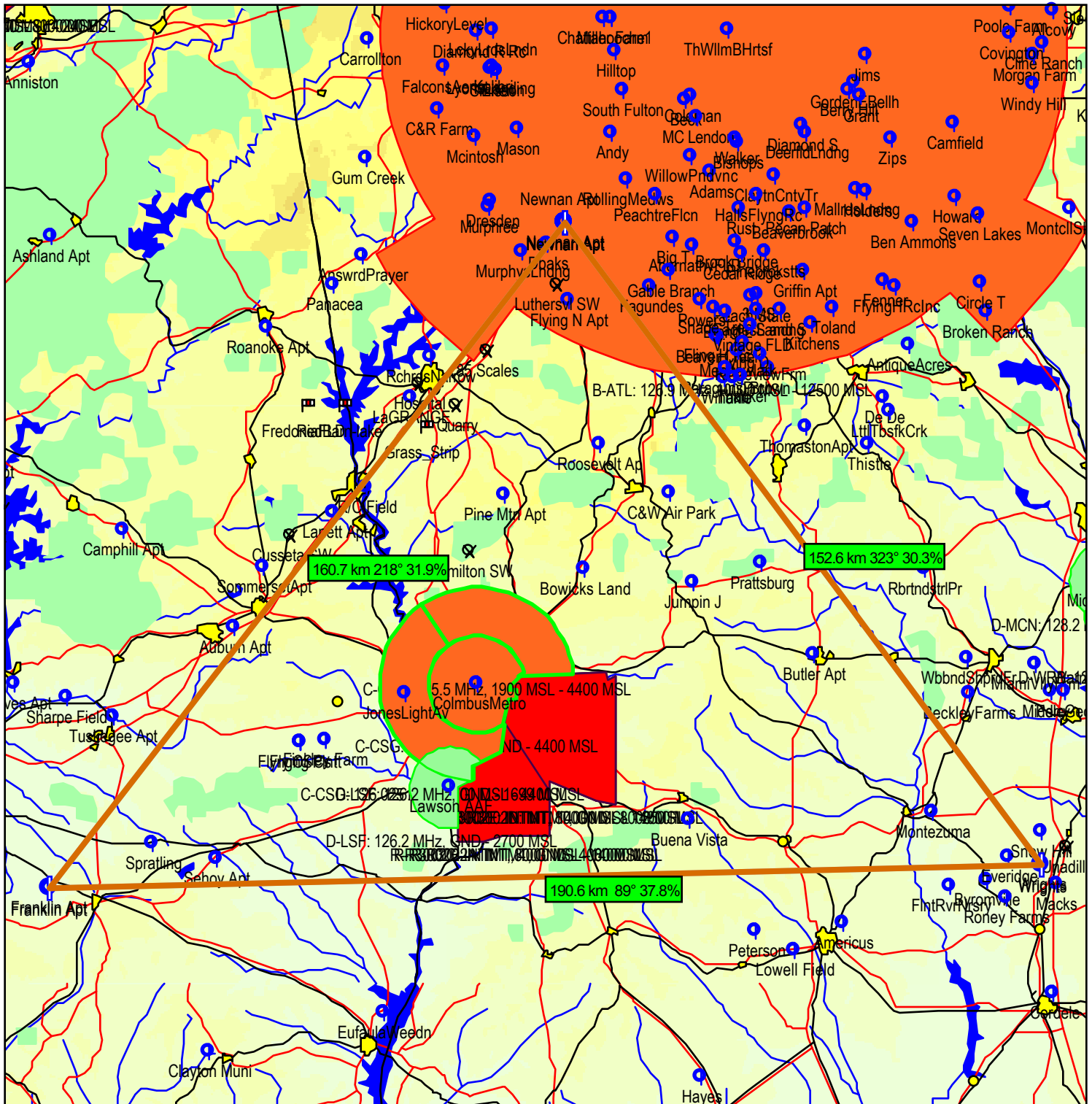
Route description

500k Tri Franklin Cordele FlyingN			Triangle - FAI			
	Name	Latitude	Longitude	Distance	Course	Percentage
Takeoff	Flying N Apt	N33°10.500	W084°45.000			
Startpoint	Flying N Apt	N33°10.500	W084°45.000	149.8 km	222°	29.7%
1. Turnpoint	Franklin Apt	N32°10.000	W085°48.667	193.8 km	96°	38.4%
2. Turnpoint	Cordele	N31°59.181	W083°45.921	161.2 km	325°	31.9%
Finishpoint	Flying N Apt	N33°10.500	W084°45.000			
Landing	Flying N Apt	N33°10.500	W084°45.000			
	Total distance			504.8 km		
	Scoring distance			504.8 km		
	Points					



Route description

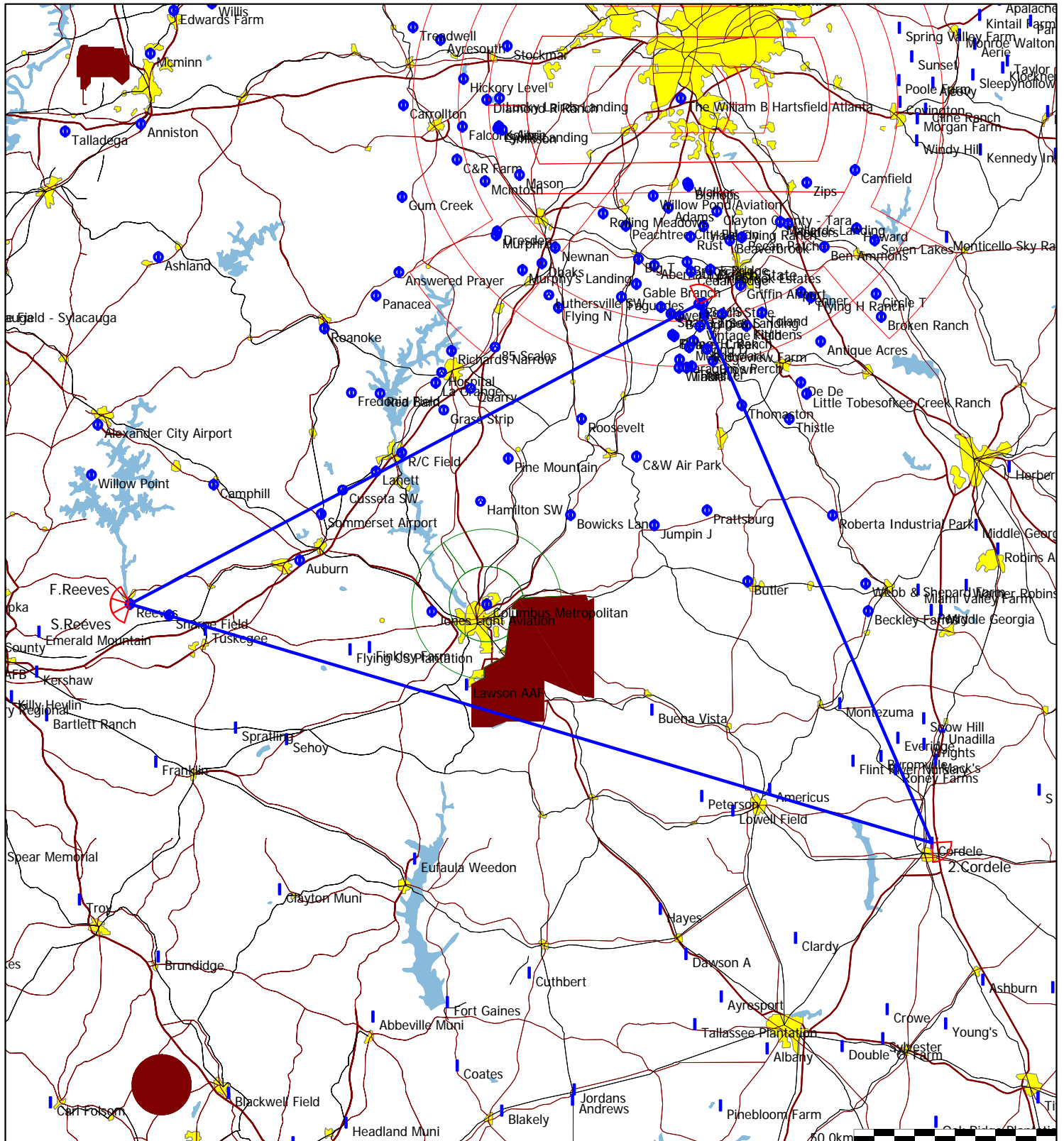
500k Tri Newnan Franklin Wrights			Triangle - FAI			
	Name	Latitude	Longitude	Distance	Course	Percentage
Takeoff	Newnan Apt	N33°18.500	W084°45.500			
Startpoint	Newnan Apt	N33°18.500	W084°45.500	160.7 km	218°	31.9%
1. Turnpoint	Franklin Apt	N32°10.000	W085°48.667	190.6 km	89°	37.8%
2. Turnpoint	Wright's	N32°12.376	W083°47.177	152.6 km	323°	30.3%
Finishpoint	Newnan Apt	N33°18.500	W084°45.500			
Landing	Newnan Apt	N33°18.500	W084°45.500			
	Total distance			503.8 km		
	Scoring distance			503.8 km		
	Points					



Type: FAI Triangle - (511.1km) [511.1pts]

Task distance: 511.1km

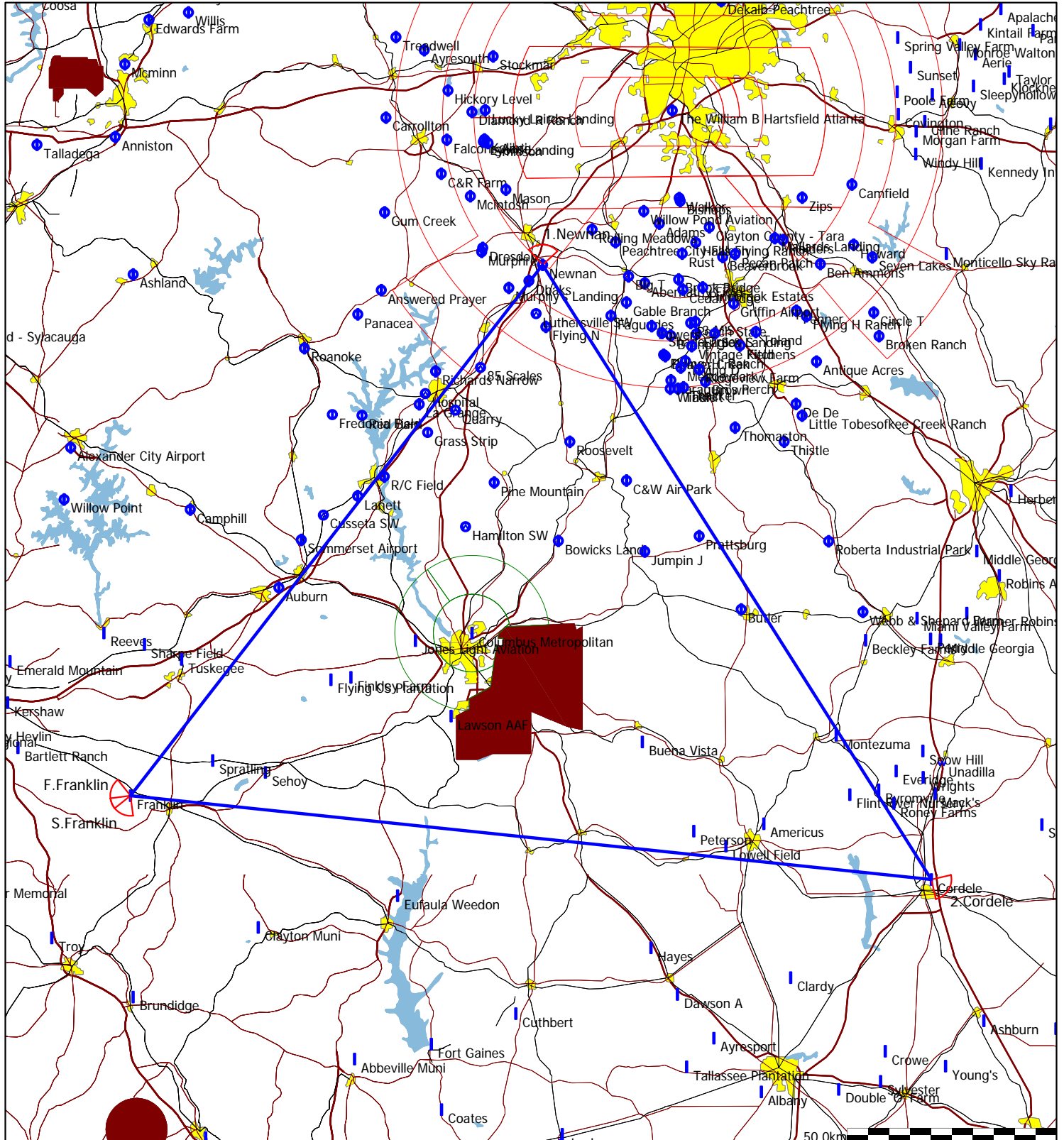
Style	Code	Points	Latitude	Longitude	Dis.	Crs.
Take off	1	La Grange	N33°00.500'	W085°04.400'		
Start	32	Reeves	N32°31.000'	W085°52.750'		
1.Point	108	Peach State	N33°11.000'	W084°22.800'	158.6km	62°
2.Point	46	Cordele	N31°59.181'	W083°45.921'	144.7km	156°
Finish	32	Reeves	N32°31.000'	W085°52.750'	207.7km	287°
Landing	1	La Grange	N33°00.500'	W085°04.400'		



Type: FAI Triangle - (528.4km) [528.4pts]

Task distance: 528.4km

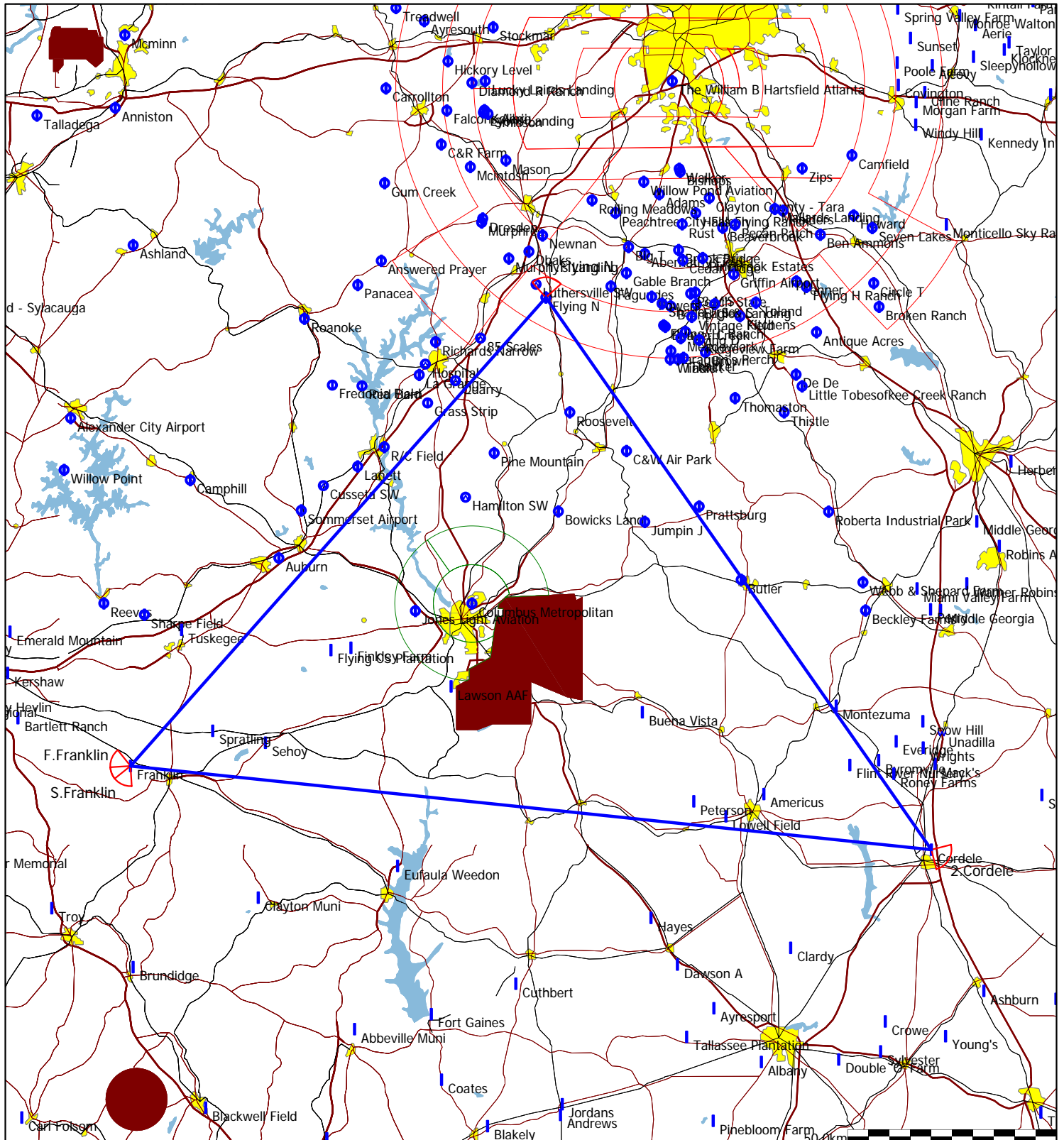
Style	Code	Points	Latitude	Longitude	Dis.	Crs.
Take off	1	La Grange	N33°00.500'	W085°04.400'		
Start	16	Franklin	N32°10.000'	W085°48.667'		
1.Point	25	Newnan	N33°18.500'	W084°45.500'	160.5km	38°
2.Point	46	Cordele	N31°59.181'	W083°45.921'	173.7km	147°
Finish	16	Franklin	N32°10.000'	W085°48.667'	194.2km	276°
Landing	1	La Grange	N33°00.500'	W085°04.400'		



Type: FAI Triangle - (504.9km) [504.9pts]

Task distance: 504.9km

Style	Code	Points	Latitude	Longitude	Dis.	Crs.
Take off	1	La Grange	N33°00.500'	W085°04.400'		
Start	16	Franklin	N32°10.000'	W085°48.667'		
1.Point	14	Flying N	N33°10.500'	W084°45.000'	149.7km	41°
2.Point	46	Cordele	N31°59.181'	W083°45.921'	161.0km	145°
Finish	16	Franklin	N32°10.000'	W085°48.667'	194.2km	276°
Landing	1	La Grange	N33°00.500'	W085°04.400'		



Type: FAI Triangle - (519.1km) [519.1pts]

Task distance: 519.1km

Style	Code	Points	Latitude	Longitude	Dis.	Crs.
Take off	1	La Grange	N33°00.500'	W085°04.400'		
Start	16	Franklin	N32°10.000'	W085°48.667'		
1.Point	250	Murphy's Landing	N33°15.524'	W084°50.679'	151.3km	37°
2.Point	46	Cordele	N31°59.181'	W083°45.921'	173.7km	144°
Finish	16	Franklin	N32°10.000'	W085°48.667'	194.2km	276°
Landing	1	La Grange	N33°00.500'	W085°04.400'		

